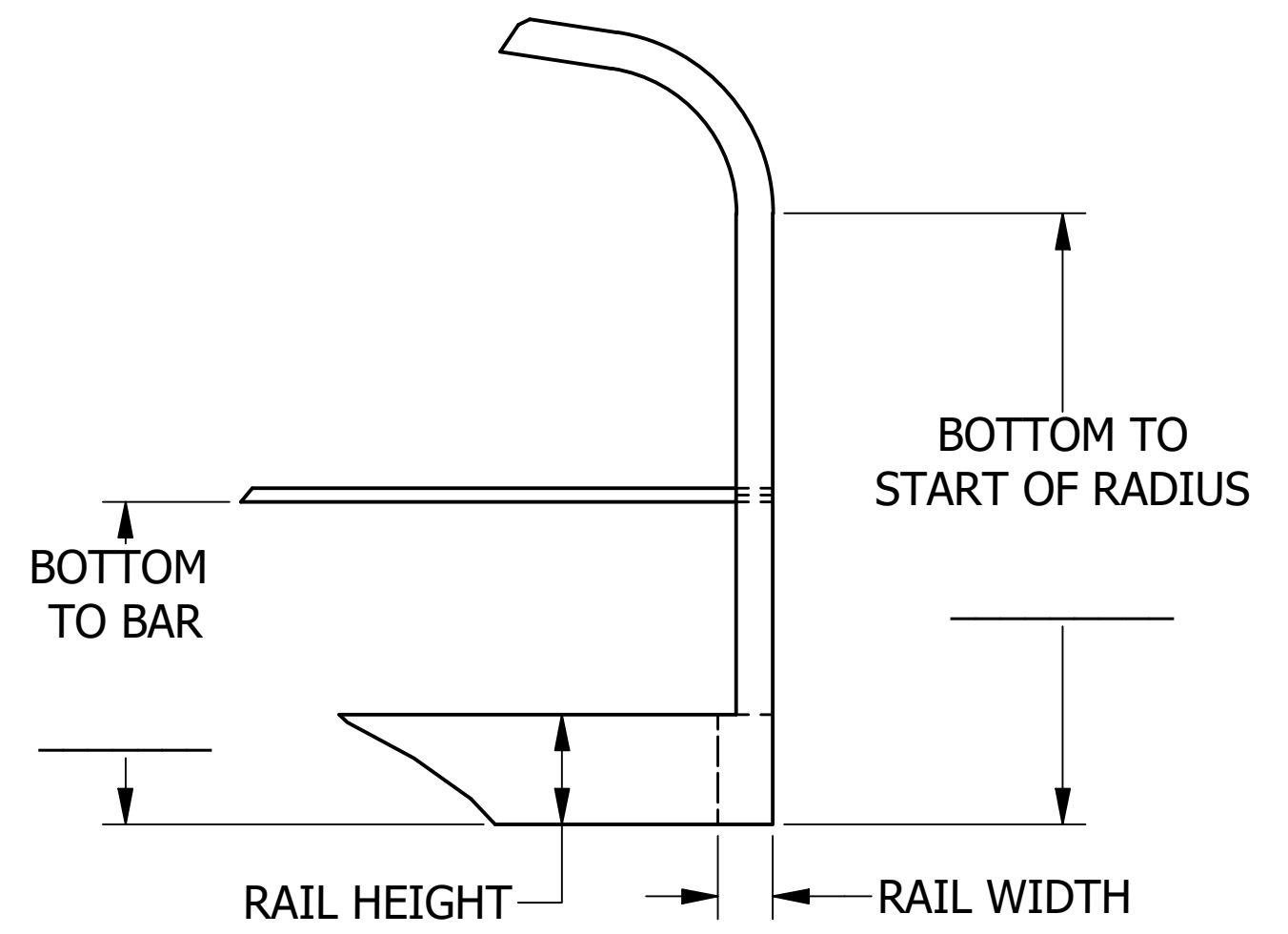
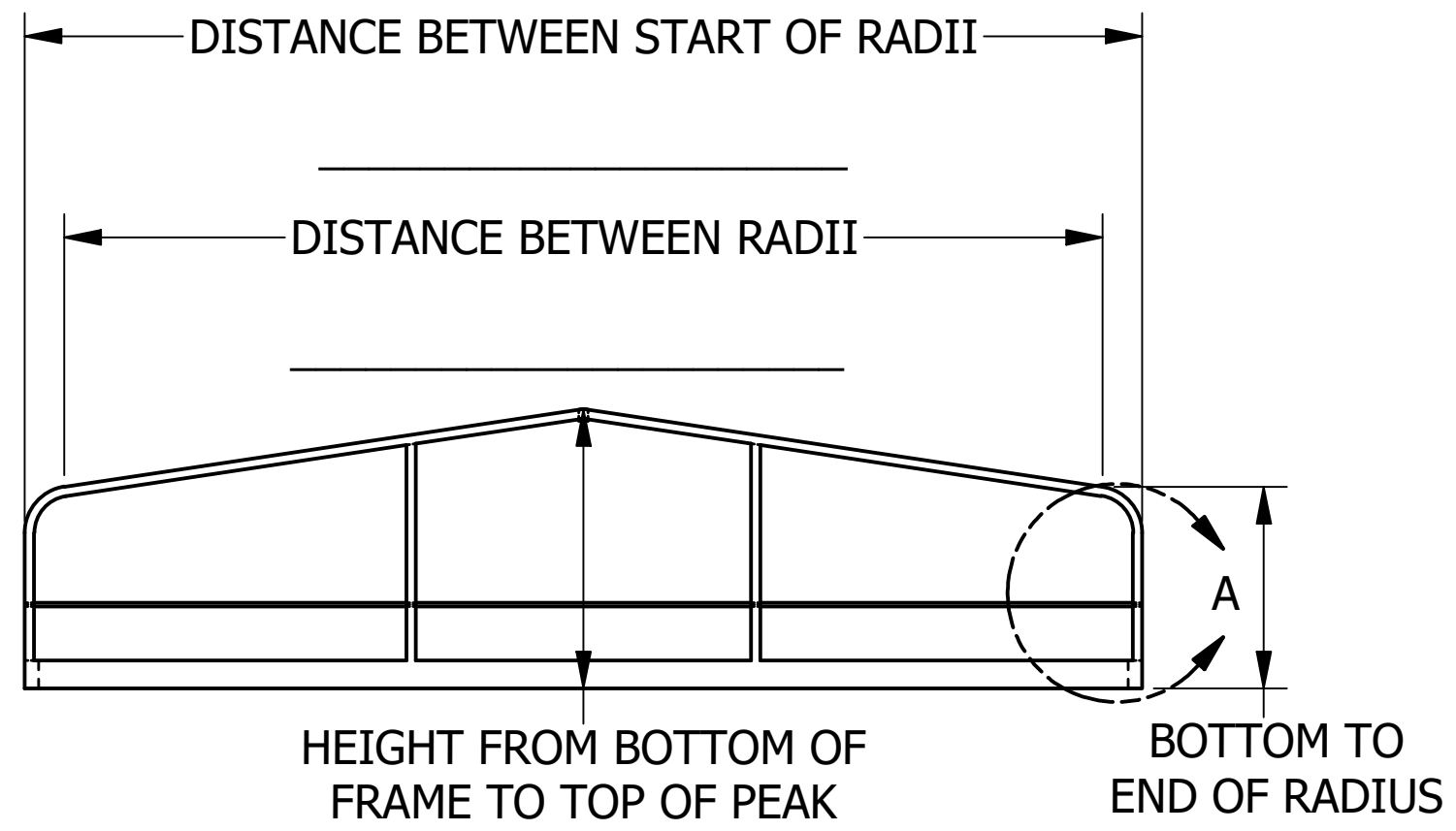
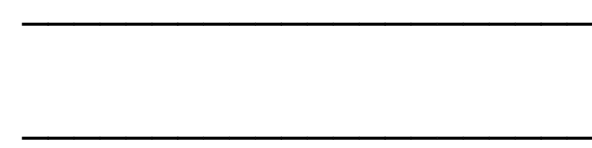


REVISIONS				
REV	ECN	DATE	DESCRIPTION	ISSUER
A	EC-00852	4/23/2019	RELEASE	RML

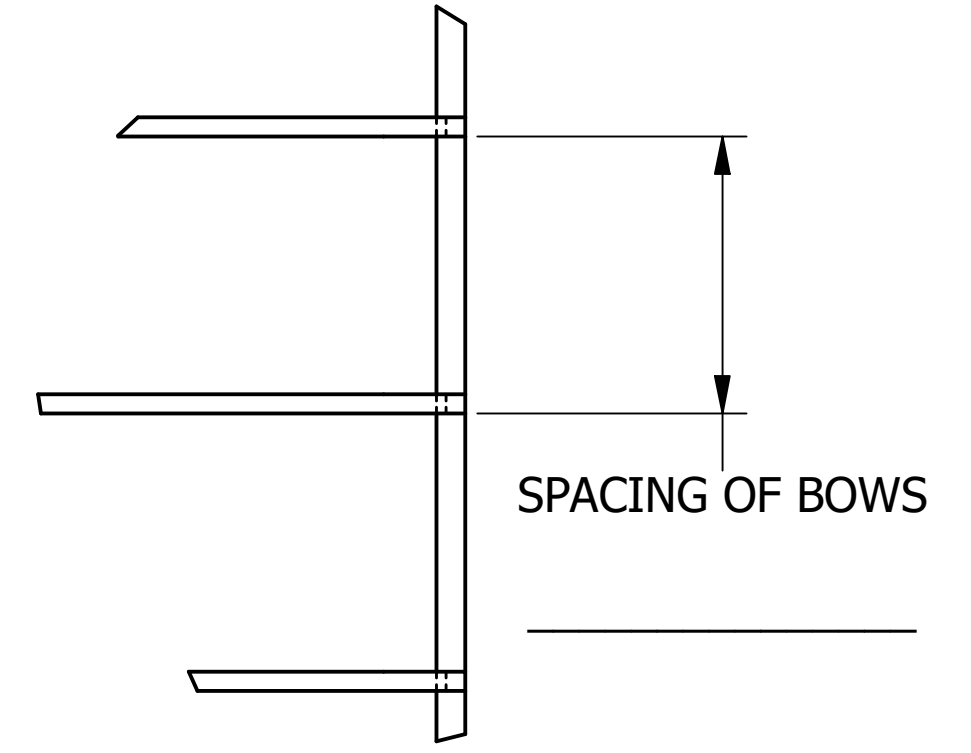
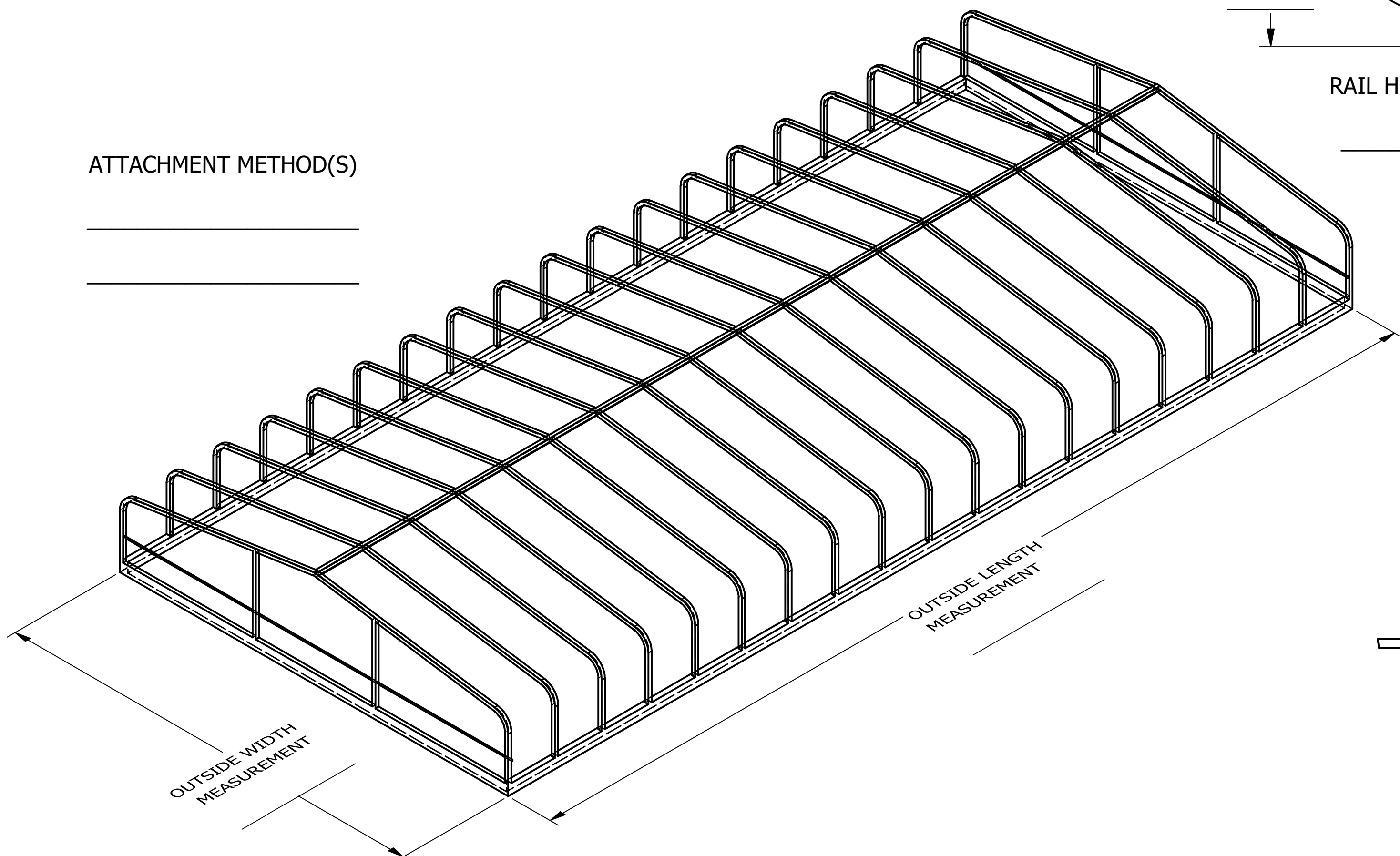
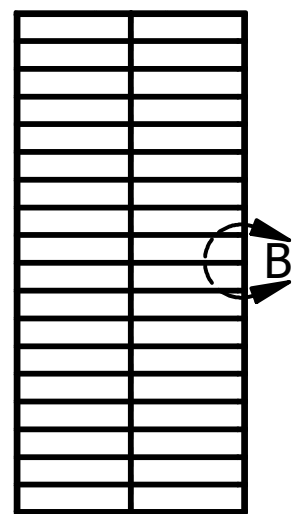


ATTACHMENT METHOD(S)



DETAIL A

TOTAL NUMBER OF BOWS



DETAIL B

TOLERANCES - UNLESS NOTED
 DECIMAL ±
 FRACTION ±
 ANGLE ±



1314 Walnut St. - Springfield, SD 57062 605-369-6000

TITLE:

CRAFTLANDER HIGH TOP FRAME DETAIL SHEET

SIZE

C

DRFT: **robert.lambert**
 ENGR: **CRH**

DATE **4/23/2019**
 DATE **4/23/2019**

SCALE

SHEET **1**
 1

PART NO:

F-170

NOTICE THIS ILLUSTRATION IS THE PROPERTY OF RUSH-CO, AND MUST NOT BE USED IN ANY WAY DETRIMENTAL TO RUSH-CO'S INTERESTS.